



Marine Capability

www.case.international

OUR OFFICES

Global Presence of Companies



North America
Houston, Texas



UK & Europe
Edinburgh, Scotland



South America
Florianopolia, Brazil



Australia
Victoria, Queensland
& New South Wales



New Zealand
Auckland

24 HOUR TEAM

Accelerate the delivery
of effective solutions

8 OFFICES

Our talent is spread all
over the world

The CaSE Difference

Our industry-leading engineering capability provides integral superior solutions.



SUSTAINABLE & INNOVATIVE

By embracing new technologies and techniques we are able to develop innovative solutions that minimise the impact on the environment. It is our priority to protect the present and future of our planet.



GLOBAL CONNECTION

Our teams all over the world work close together on projects to be able to accelerate the delivery of effective solutions.

EXPERIENCED TEAM

Our team consists of highly talented Engineers with greatly sought-after pragmatic experience that are passionate about what they do.



SAFETY AWARE

Safety is the focus of all our projects. We care about the safety of our people, the people building and the people using the infrastructure we construct.



SEAMLESS INTEGRATION

Working closely with our clients helps us understand their needs fully.



The CaSE Business

CaSE is a leading management and engineering consultant in Australia, New Zealand, Brazil and Spain, UK & Europe providing experienced project management, technical services and commercial expertise to major civil infrastructure contractors



Design and technical consulting team providing temporary works design, permanent works interface, design coordination and bridge construction engineering.



Leading management & advisory contractor providing experienced project management and technical services to major civil infrastructure contractors.

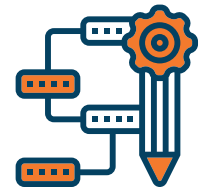


Complements the CaSE Engineering's expertise all aspects of infrastructure construction by providing technical and practical experience in traffic management to Clients and Contractors.

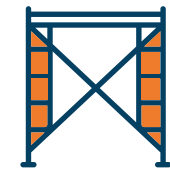


Provides industry-leading professional staff ensuring that our specialist advice is comprehensive, tailored, efficient and founded on decades of pragmatic experience.

Marine Engineering Services



Planning & Construction



Temporary Works Design



Permanent Works Design



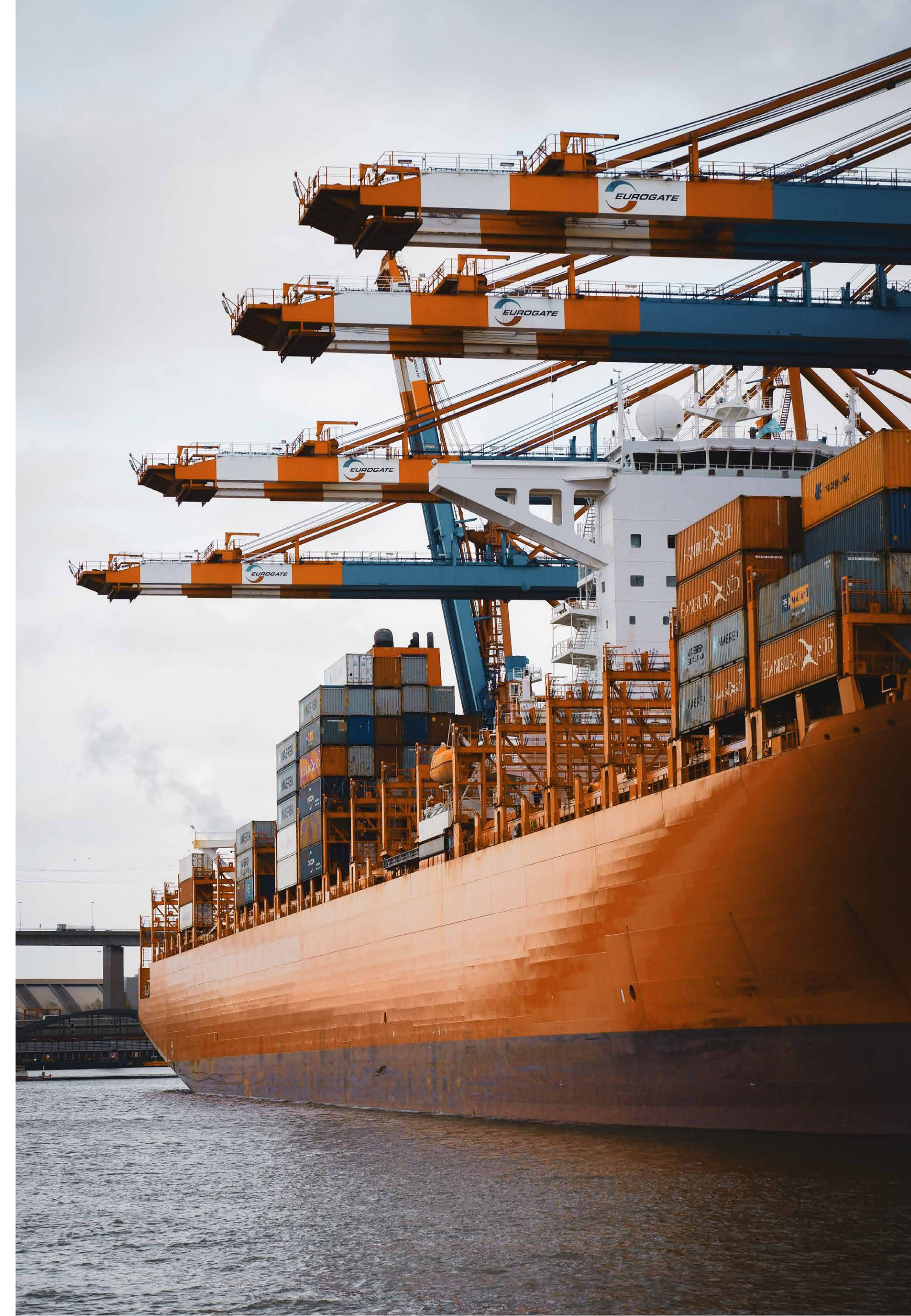
Selection & Procurement



Site Supervision



Commercial Assistance



Project Types

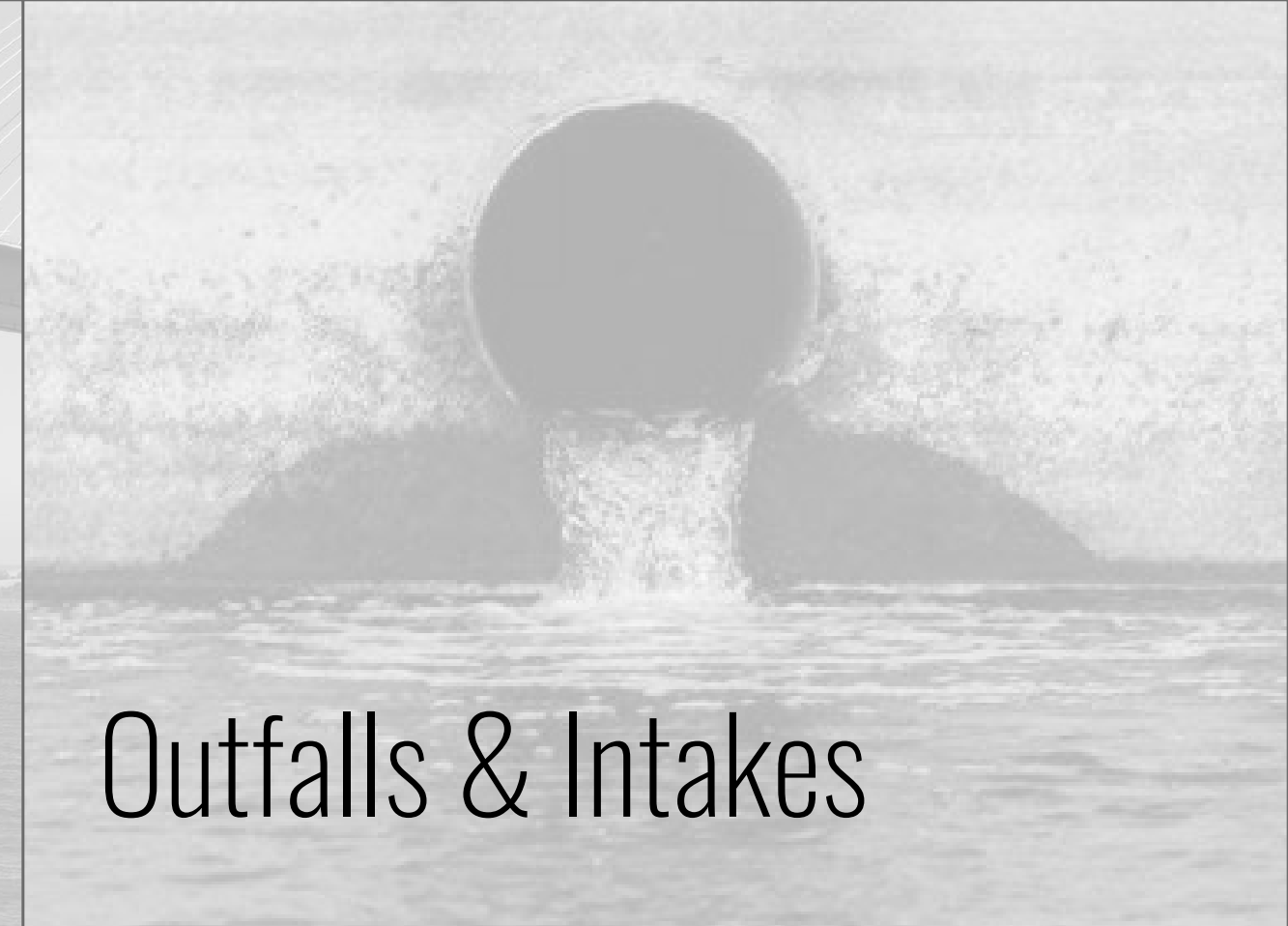
Services can be provided to support the design and construction of the following type of marine structures.



Repair & Maintenance



Bridge Foundations



Outfalls & Intakes



Container Quays & Warfs



Caissons & Cofferdams



Dry Docks



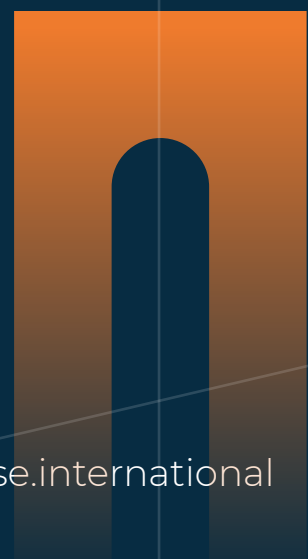
Jetties & Tressleways



Immersed Tube Tunnels

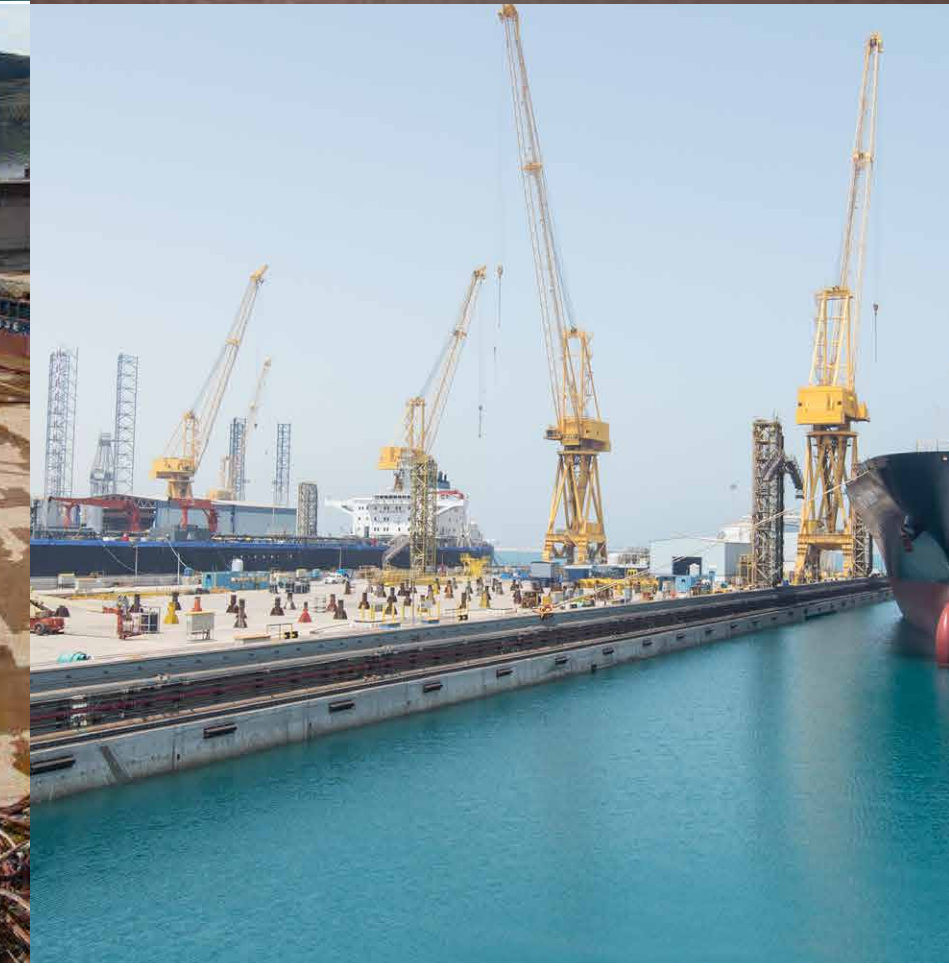
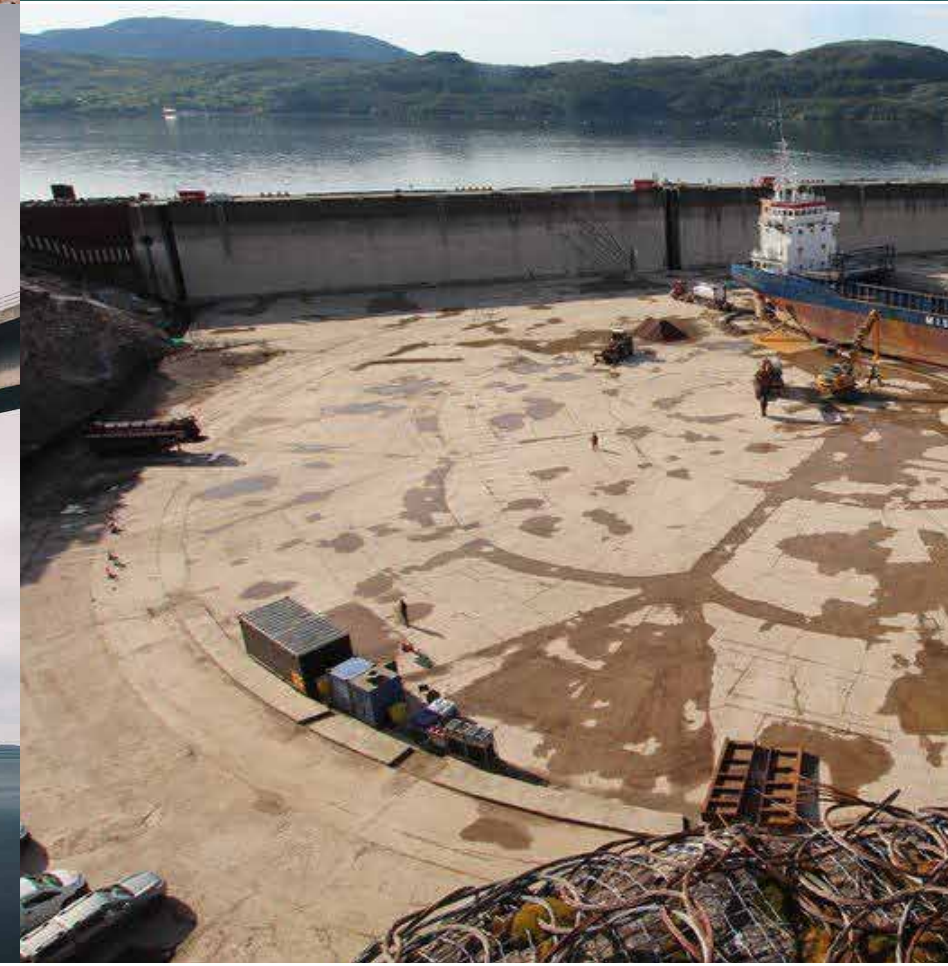
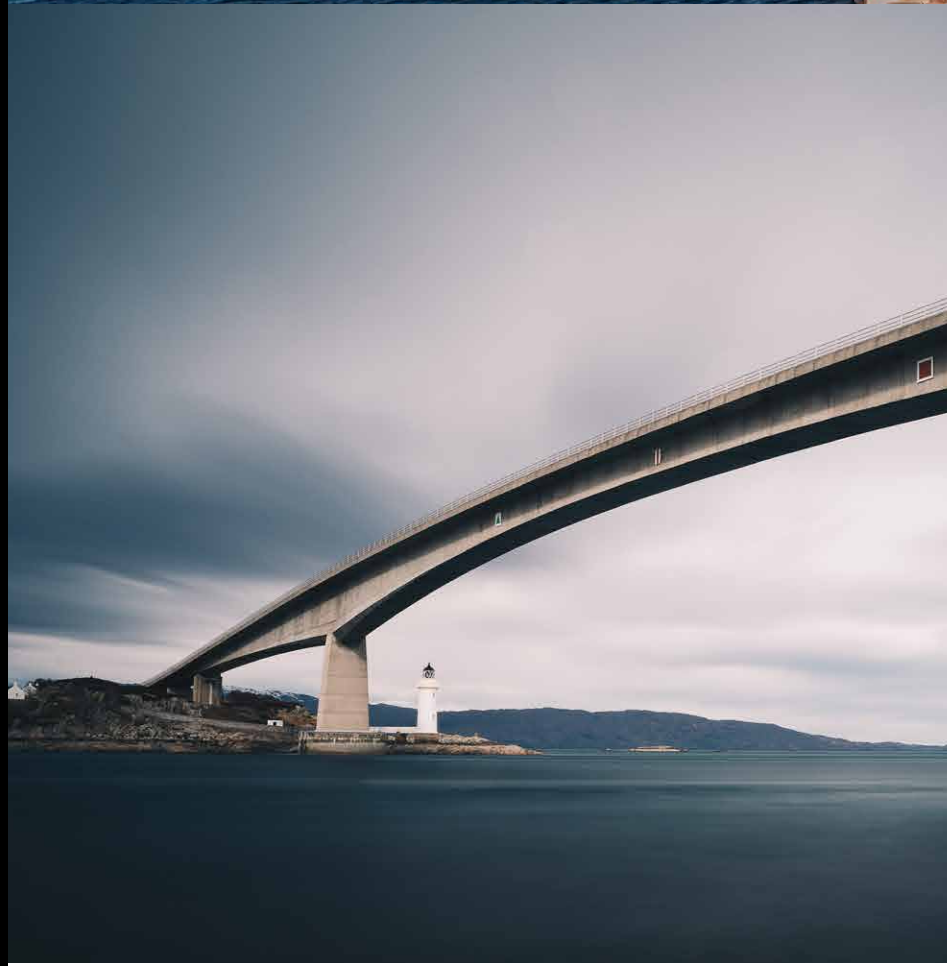
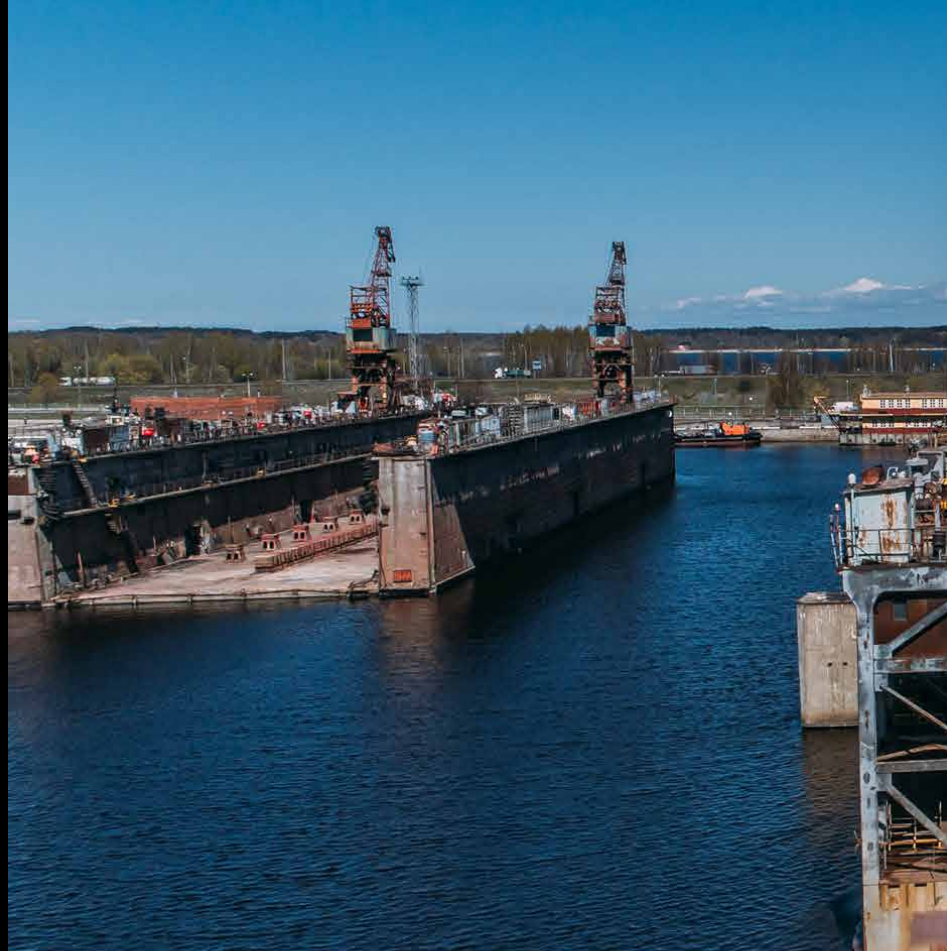
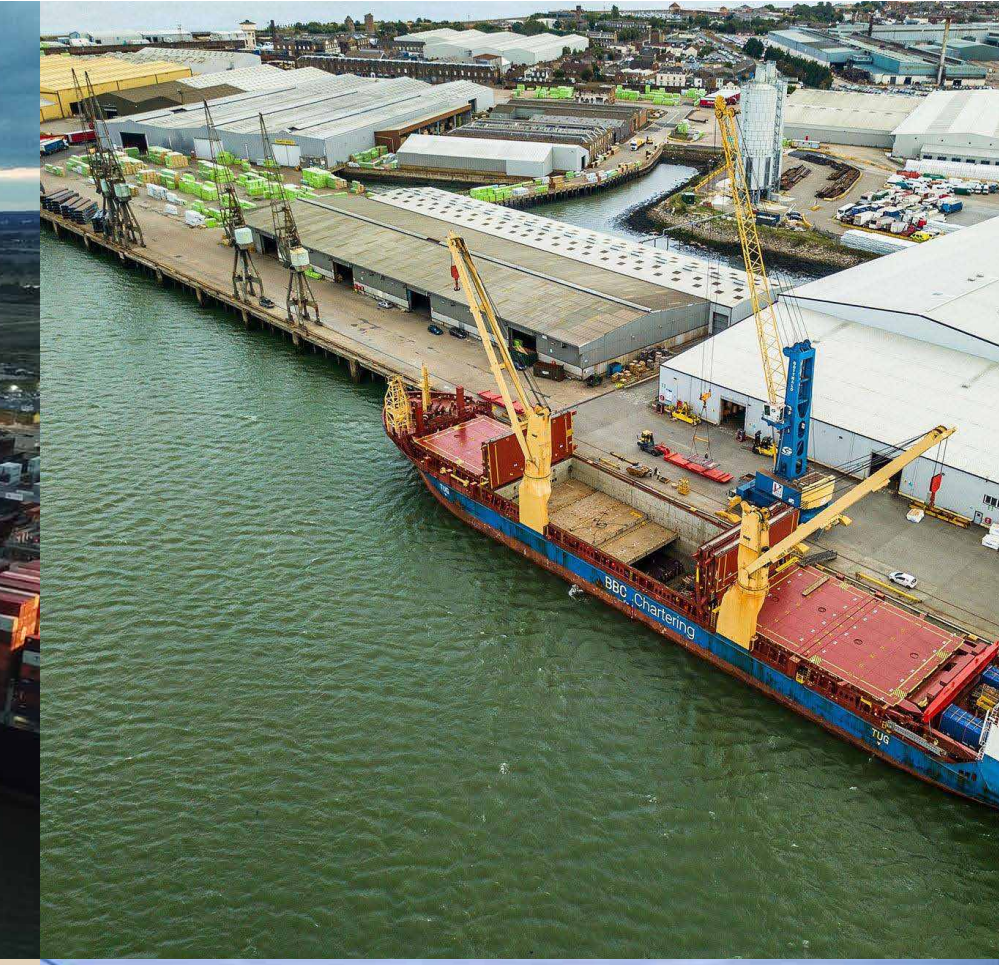
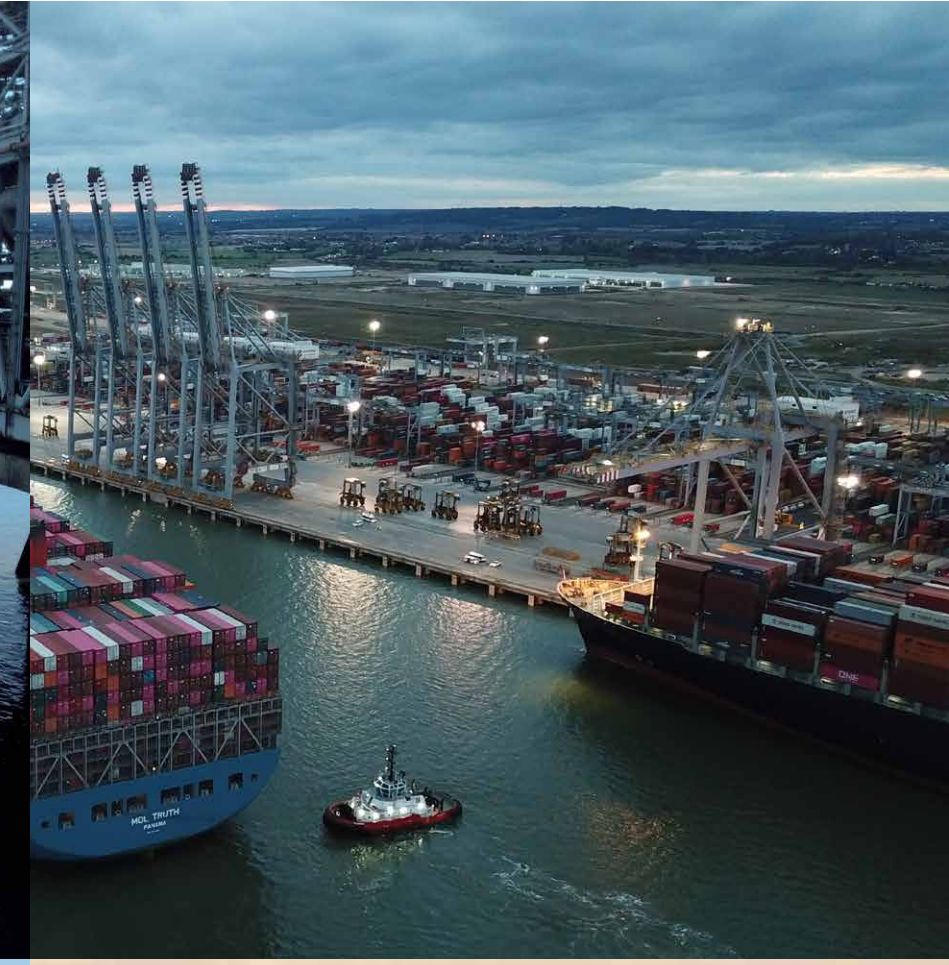
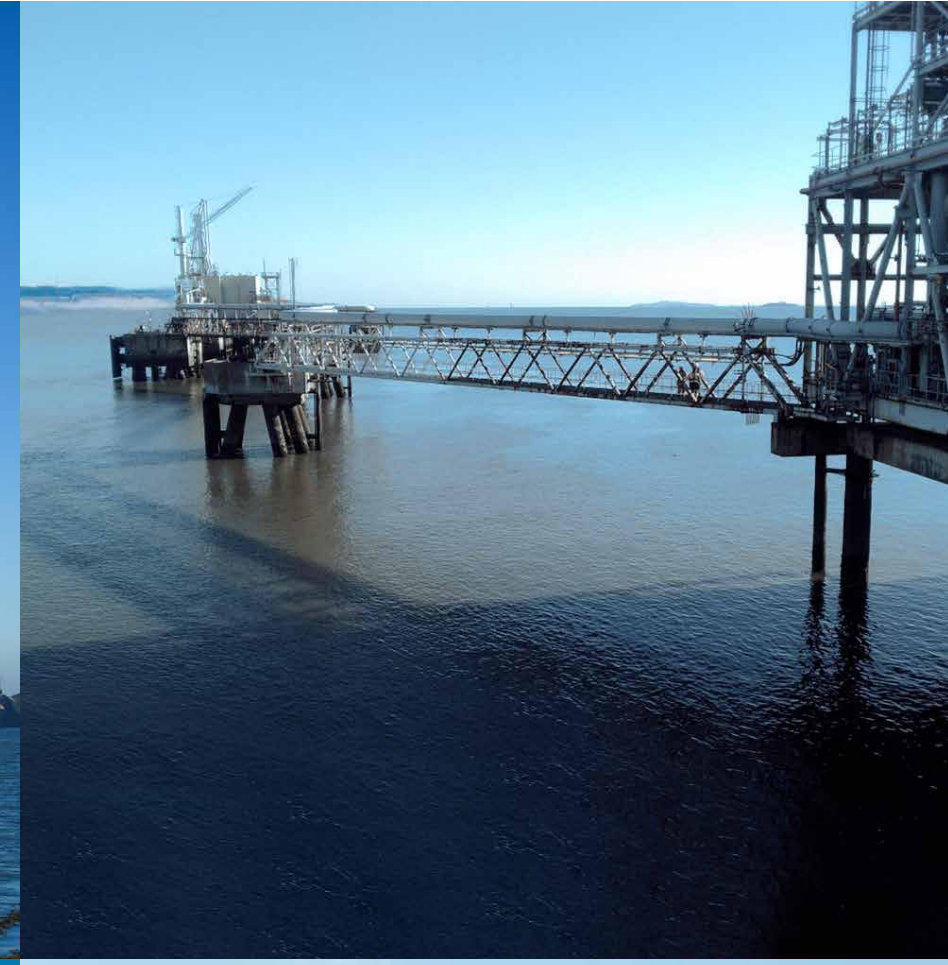


Ferry Terminals



Project Experience

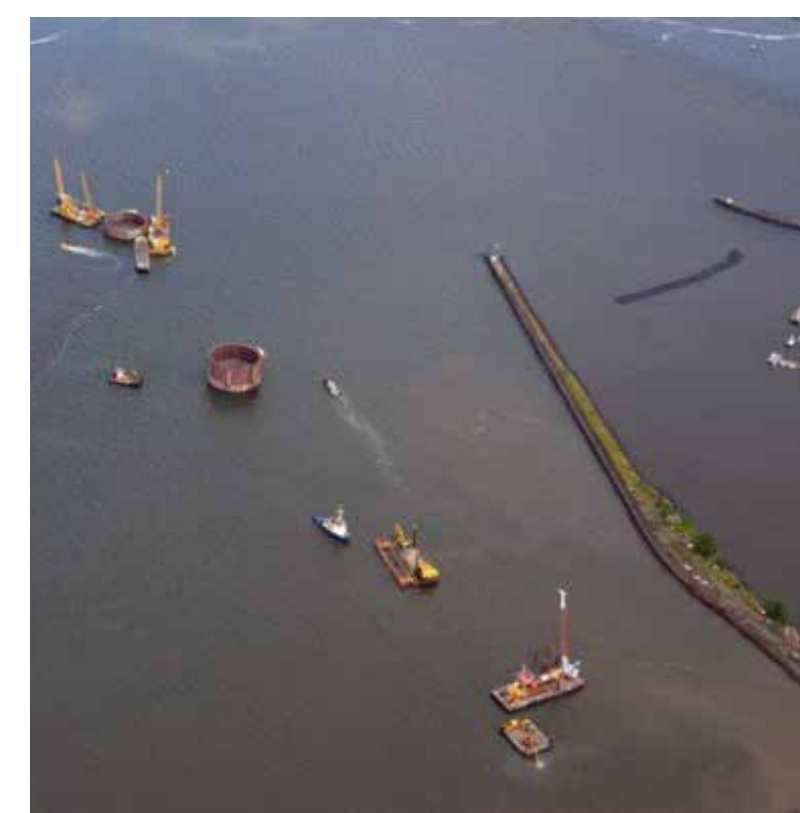
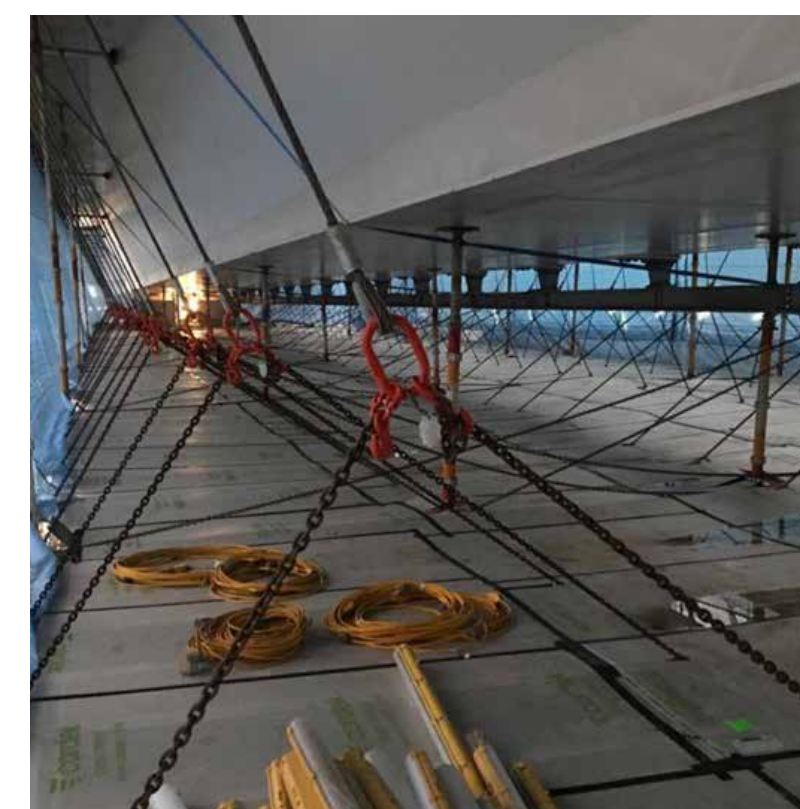
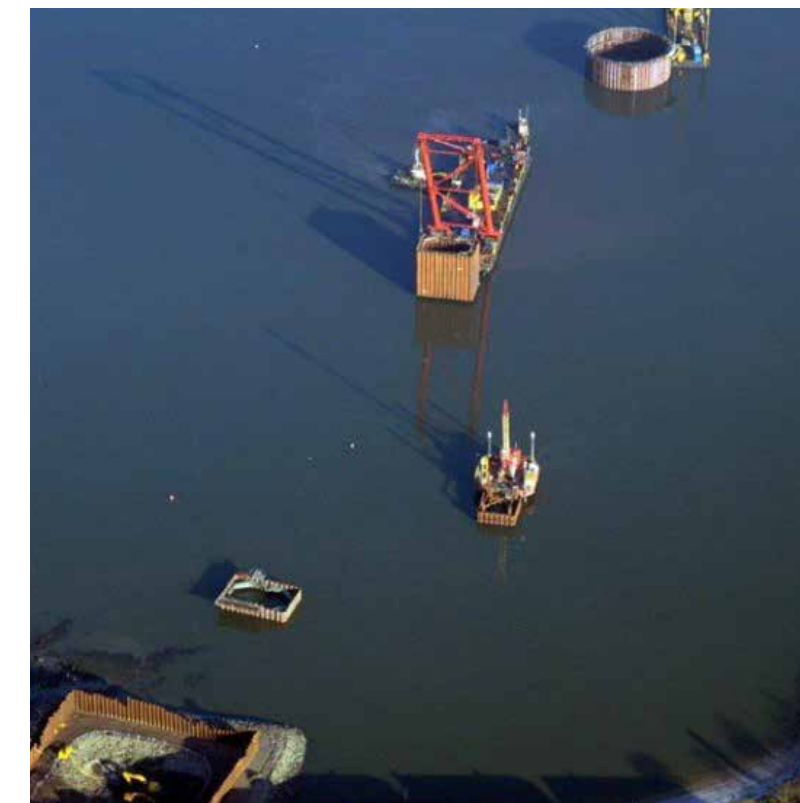
- Forth Rail Bridge
- Kessock Bridge
- Clyde Bridge
- Nowra Bridge
- Batemans Bay Bridge
- Grafton Bridge
- Sydney Light Rail
- Kessock Bridge



Queensferry Crossing

Wind Turbine Cradle R & D - Temporary Works Design

- AVN Single Box Modifications
- AVS Webdeck Modifications



Hound Point Jetty



Hound Point Oil Terminal – Suspended access platform & encapsulation temporary works design

- Design of 12.5m x 8.0m suspended access platform
- Encapsulation for blasting & painting of permanent works truss bridge
- Design of longitudinal runway beams

Container Port Quay Wall, River Thames, UK



Suspended Deck, Sheerness UK

A temporary works solution has been used to construct a suspended deck in an operational harbour as shown

The piles were installed down through a revetment and in the sea using a travelling platform which moves the cranes and piling equipment by skidding along on top of the piles. The precast deck elements were subsequently installed without the need for floating cranes.

The advantage of this system is that there is minimal restriction on the use of the harbour area by other vessels. Several piles can be installed from one setup and the risks involved in handling marine equipment are avoided. In the example shown a suspended deck area of 31,000 square metres supported on 850 piles was constructed with outputs of up to 35 piles per week for each traveller.



Cofferdam Seal Dry Dock Gate, Plymouth, UK



Ferry Terminal, Holyhead, UK



Armaments Jetty Firth of Forth ,UK



Roll-on/Roll-off Terminal, Thames, UK



Carric Bridge Foundations, Skye Crossing, UK



Dry Dock, Kishorn, UK



Caisson Jetties, Qatar



GPIC Jetties, Bahrain

- A 2,700 metres long conveyor to the loading head
- 2 pile bents plus precast crossheads and deck



Dry Docks Ras Lafan, Qatar



Etab Offshore

Crane Cab Clazing

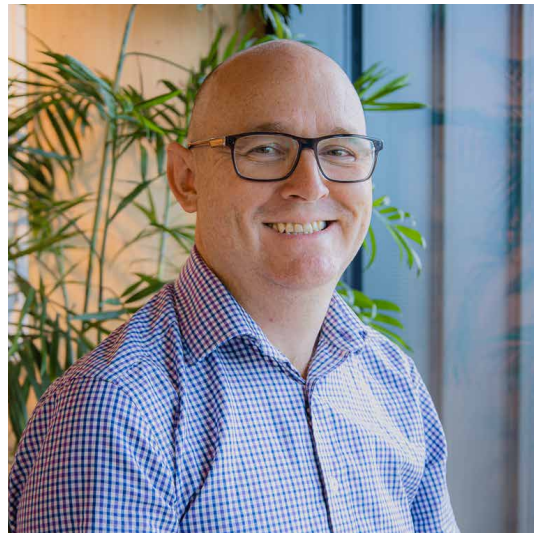
Temporary Works Design

- Suspended Access For Offshore Maintenance

Fender Installation Manila International Container F3



Our Marine Engineering Experts



Jonathan Davies

Managing Director

Jonathan is a highly experienced heavy civil construction and project manager with over 20 years experience in a wide range of construction sectors and roles. He has a strong background in structural and heavy civil engineering, as well as temporary structures designs.



Jason Moore

Director / Project Manager

Jason has over 25 years experience in the infrastructure industry and is an accomplished leader with demonstrated project and programme leadership capability. His broad experience for both contracting and client organisations spans complex infrastructure projects. He has extensive experience in the leadership of diverse teams and the management of large-scale projects through all phases on technically challenging and iconic projects.



Barry Pike

Principal Engineer

Barry has more than 45+ years of experience in heavy civil construction, temporary works design and implementation. His vast experience encompasses not only the structural design and detailing of the temporary works, but includes assistance in determining the total construction procedure, with full consideration being given to the contractors resources, personnel, and experience.

Our Marine Engineering Experts



John Henderson
Civil & Marine Consultant

John has been involved in heavy civil marine engineering for more than 40 years. His responsibilities have included tendering, delivering, and providing advice on major marine and bridge projects and leading multi-disciplinary and international teams.



Rod Jeffrey (Melbourne)
Southern Region Manager

Rod brings 30 years of project management expertise including design and delivery, stakeholder, contract, rail construction and renewal in both greenfield and brownfield environments. Additional experiences consist of various road over rail works in Victoria and Pakistan and rail siding in Victoria.



Chris Norrie (Melbourne)
Principal / Senior
Geotechnical Engineer

Chris is a Chartered Civil Engineer with 11 years of experience in the design and construction of large civil works. He specialises in temporary works design, and his experience includes major infrastructure works in the UK and Australia. Chris also has experience in permanent works design for structural and geotechnical engineering.

Our Marine Engineering Experts



Peter Brown

Senior Project Engineer

Peter is a dedicated and hardworking chartered civil engineer with over 8 year's industry experience in projects ranging from \$200,000 to \$800 million. He has a proven track record in Australia and the UK for Tier 1 contractors in the delivery of complex infrastructure projects, responsible for all aspects of project delivery from safety and quality to cost control and contractual obligations. Peter is currently working on the Snowy Hydro 2.0 project.



Richard Lamb

Principal

Richard is a structural engineer with a passion for designing and building bridges, from small pedestrian and moving bridges to long-span cable supported landmarks. He has over 30 years of experience in civil, building and bridges structures with an emphasis towards less commonplace problems.



Craig Murray

Head of Engineering

For more than 20 years, Craig has expanded on a strong structural engineering background, fundamental to efficient and innovative design practices, to develop broader skills in sound planning, management and execution. Design, design management, project management, scheduling, estimating and cost control are key strengths while his drive, accuracy, and tenacious approach to problem-solving ensures efficient, timely and cost-effective project delivery.

Our Marine Engineering Experts



Craig Stoddart
Principal

Craig has over twenty years' experience as a civil engineer on a range of projects including road, rail, bridge, tunnel, marine, industrial, commercial and development projects. Craig's involvement in tunnel projects include WestConnex Stage 1B New M4, WestConnex Stage 3B Rozelle interchange, and Western Harbour Tunnel and Beaches Link.



Florian Dieterle
Principal Engineer

Florian has 10 years' experience in a wide range of infrastructure projects and has an extensive design background in civil and structural engineering. Florian manages the design team and has a mix of permanent works and temporary works design experience. He has experience in pre-cast segmental bridge design and construction, and specialist knowledge of post-tensioning and cable-stay systems.



📍 CaSE Head office
Level 8, 56 Berry Street
North Sydney, NSW 2095

📍 CaSE UK
148/15 Cumbernauld Road
G69 9DX Muirhead, Glasgow

📍 CaSE Victoria
454 Collins Street, Melbourne, VIC

📍 CaSE Queensland
25, King Street, QLD

👤 Jonathan Davies - Managing Director

☎ +61 (0)437 866 550

✉ info@case.international

🌐 www.case.international

